

KINGSGATE HIGHLANDS DIV. 3

SECTION 21, TWP. 26N, R. 5E, W.M.

KING COUNTY, WASHINGTON

NW 1/4 NW 1/4

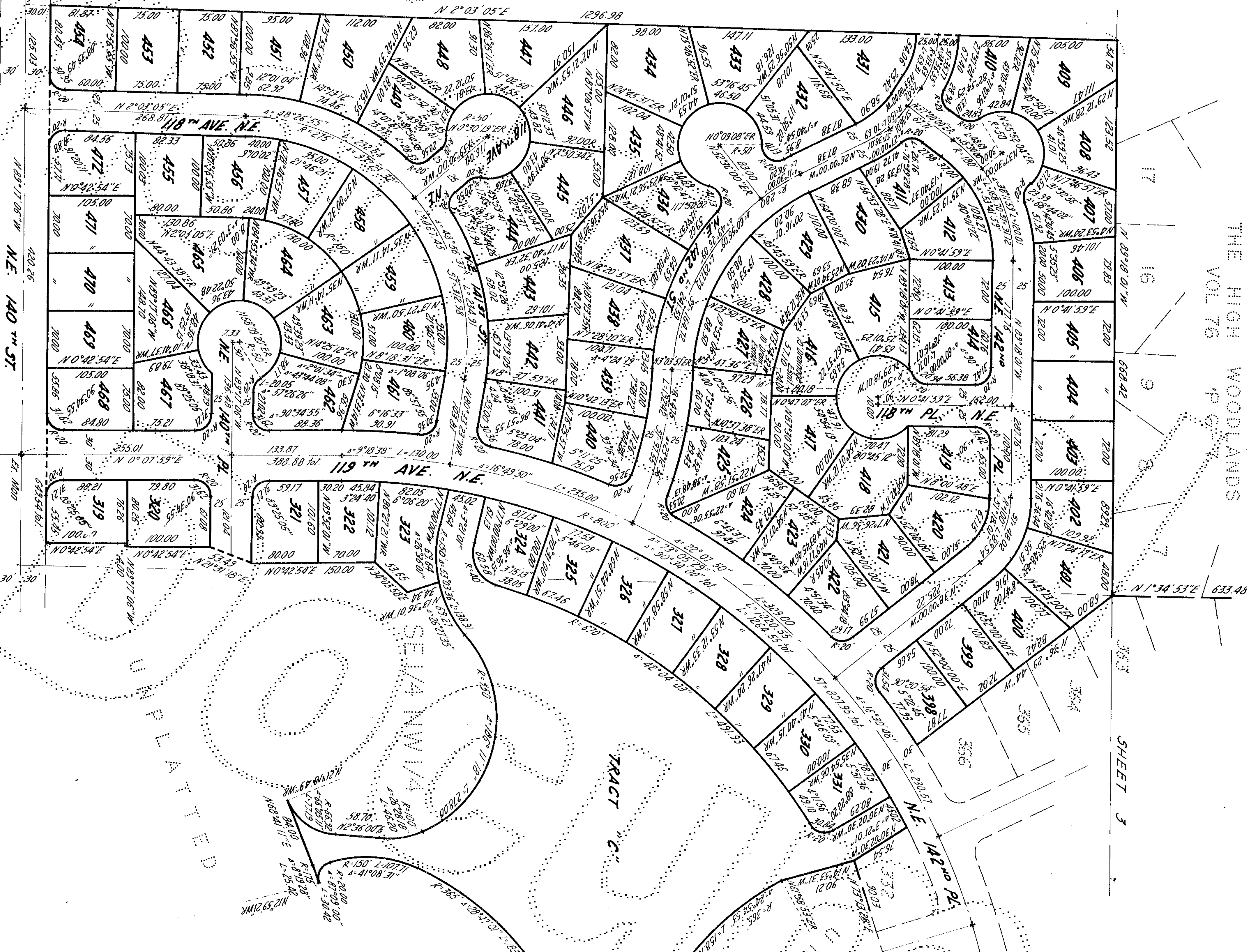
NE 1/4 NW 1/4

THE HIGH WOODLANDS
VOL 76

17 16 9 8 7
SHEET 3

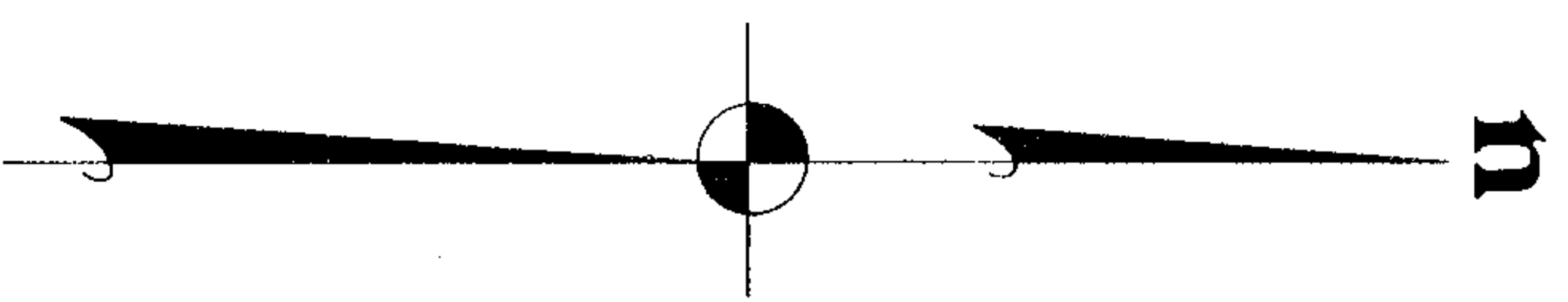
UNPLATTED

SW 1/4 NW 1/4



SCALE: 1" = 100'

* = concrete monument



R. Ruskin Fisher
R. Ruskin Fisher, P.E. Land Surveyor
Certificate No. 2017

SHEET 2 OF 3 SHEETS

66660



